

The background of the slide is a light gray gradient with several realistic water droplets of various sizes scattered across it. The droplets have highlights and shadows, giving them a three-dimensional appearance.

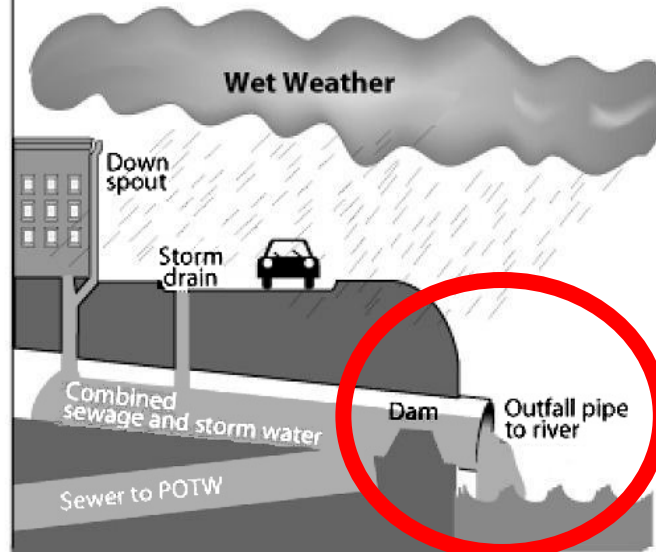
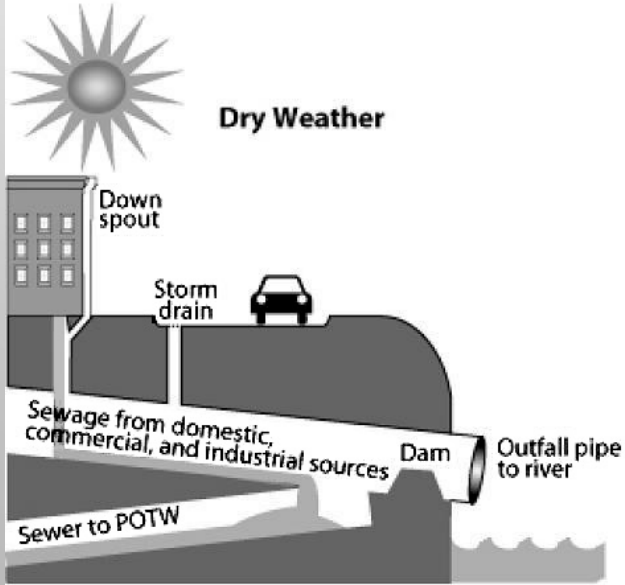
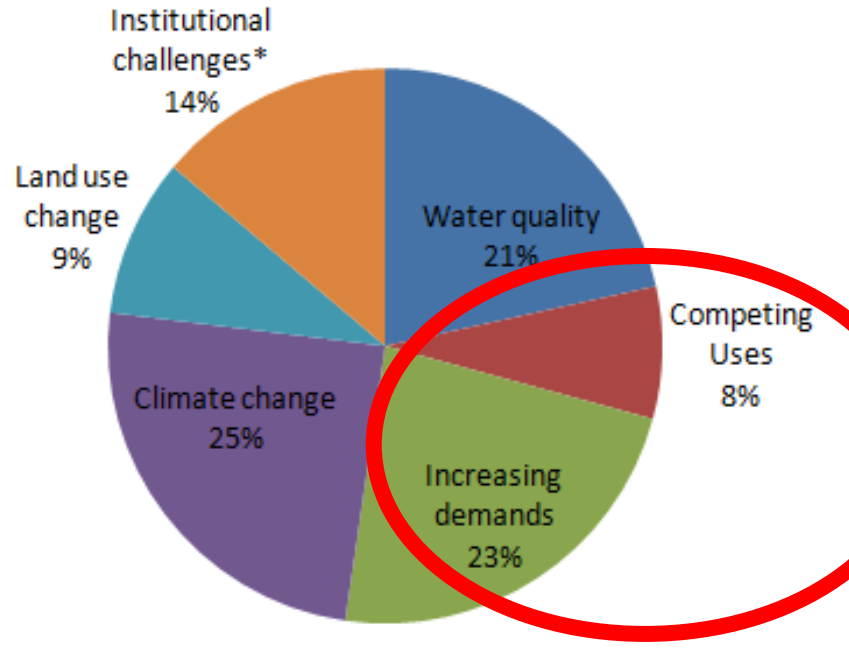
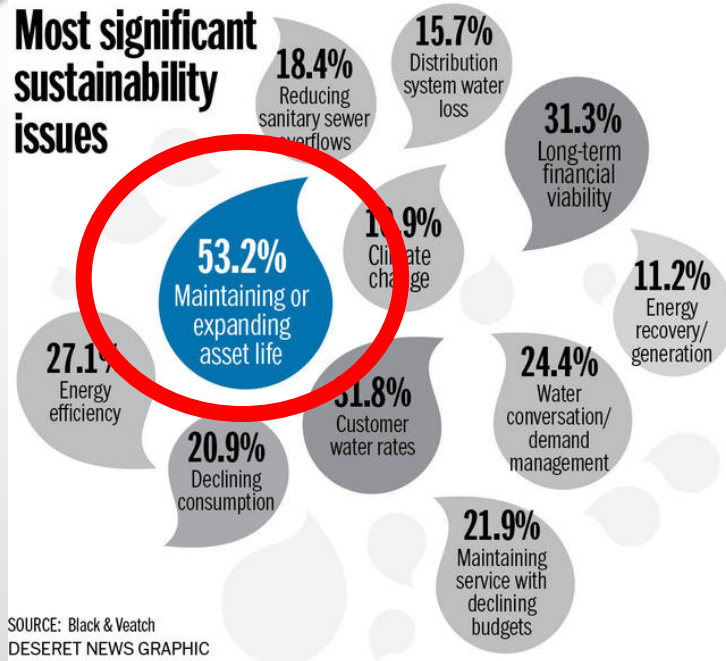
**Co-watering the grassroots: combining
community participation & social
entrepreneurship to share roof runoff
*AKA 'Sharing the rain'***

Dr Sarah Ward

RainShare

Challenges/Drivers

Most significant sustainability issues



Citizen/community participation & service provision

If we share other things, why not water?

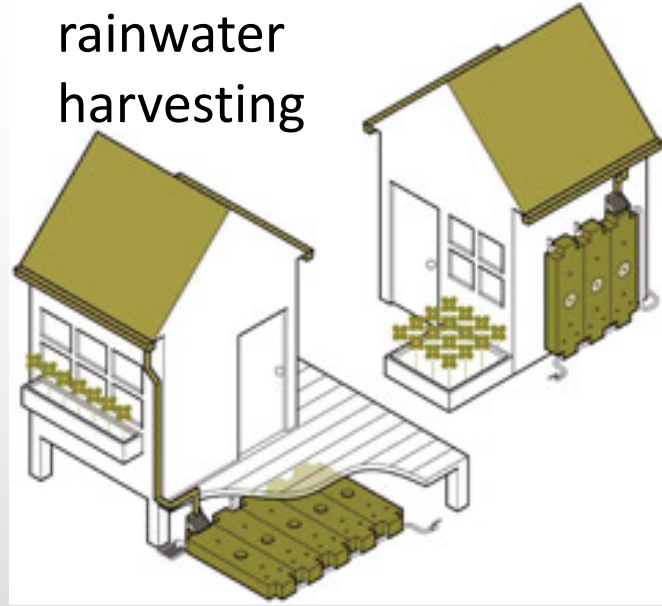


Mexico Other places already do!



Opportunities/Interventions

Traditional
rainwater
harvesting



RainShare: Commercial - Residential



RainShare: Commercial - Commercial



RainShare: Residential



e.g. Taxi firm washing 3 cars, 2-3 times/week

Opportunities/Interventions

RainShare: Urban Greening

● = distributed communal harvested rainwater storage



- Connecting people with too much runoff with those who need more!
- Including the end-user - making space for people
- Reconnecting people with water – giving back ownership
- Helping communities grow/wash/flush (swapping non-potable for potable)
- Keeping rainwater out of sewers/slow its entry to sewers (local source control)

RainShare: Urban Agriculture



RainShare *Urban Agriculture*

How do you get water for the plants?

We bring water with us from home or occasionally fill a water butt using a long hose



Would storing roof-runoff on the allotments be useful?

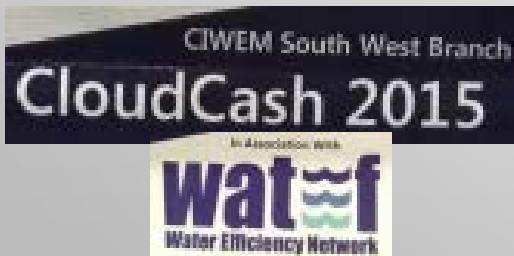
Sounds good, lets give it a try

Take roof runoff
from here...



...and use it here!

UnLtd  Award Winner



Technical assessment

RainCycle Advanced©



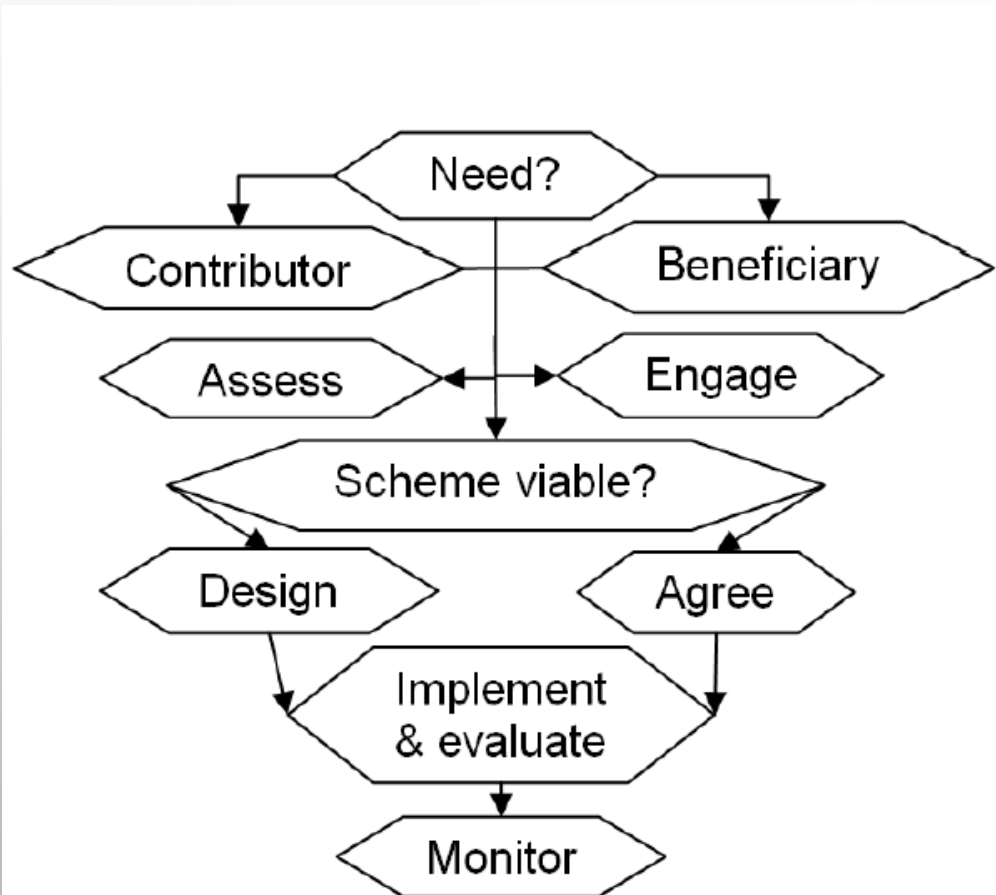
Day	Demand (m3/day)
Term Time	<input type="text" value="0.02"/>
Weekends	<input type="text" value="0.06"/>
Holidays	<input type="text" value="0.06"/>

Jan (mm)	Feb	Mar	Apr	May	June	Jul	Aug	Sept	Oct	Nov	Dec
101	87	66	71	66	51	59	64	65	122	107	120



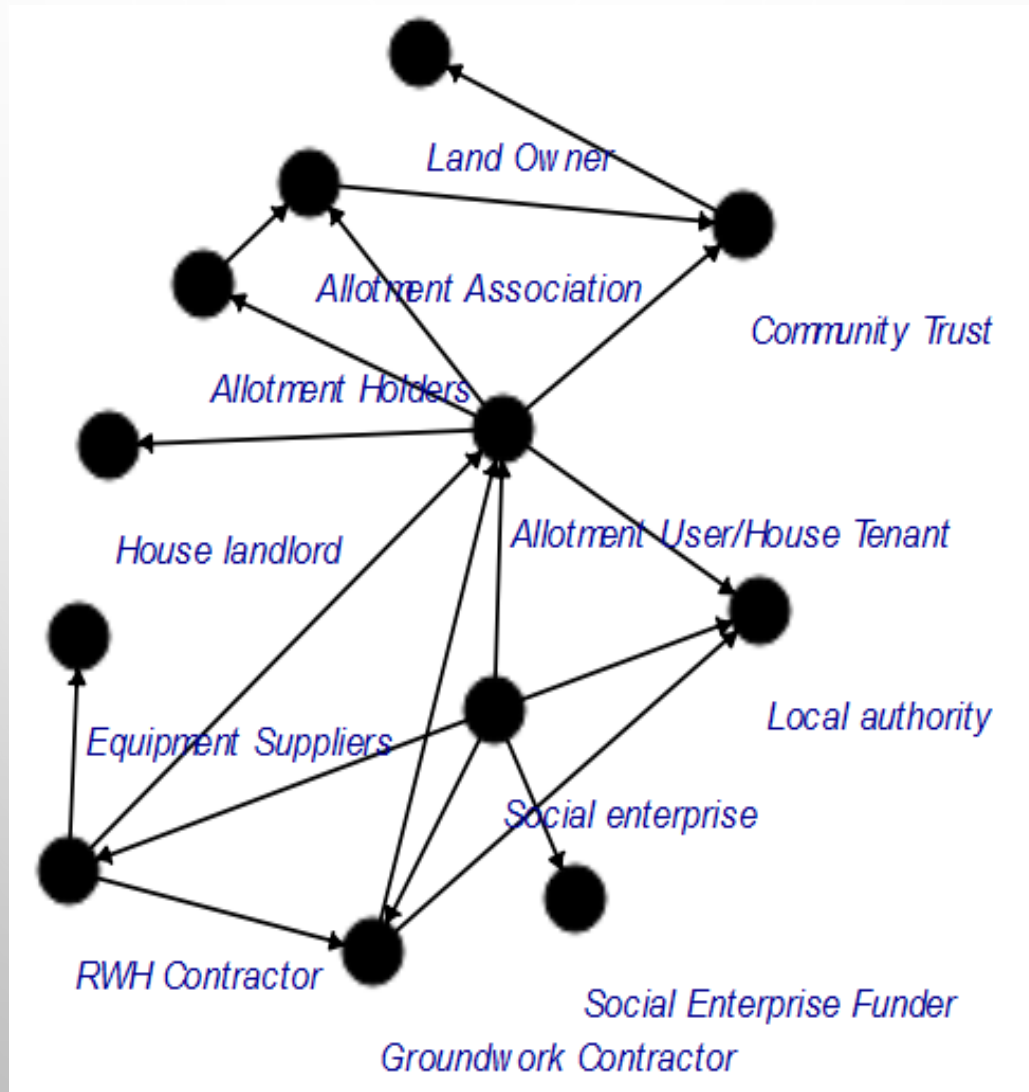
Recommendations	
Optimum tank size	1.4 m ³

Community assessment - likely participants:



- Allotment users (Beneficiaries)
- St James Allotment Association (Beneficiaries)
- Powderham Crescent Residents' Association (Contributors)
- Residents of the houses (Contributors - including private owners, landlords and students)

Actual participants!



RainShare *Urban Agriculture*



Section 50
licence,
contractor,
road closure
(TTRN)



Make-good
rainwater
goods &
install new
butts



Duct under
path for
pipe
connecting
butts & IBC



Installation of
IBC on
allotments for
communal
use

RainShare *Urban Agriculture*



Installation
fun!

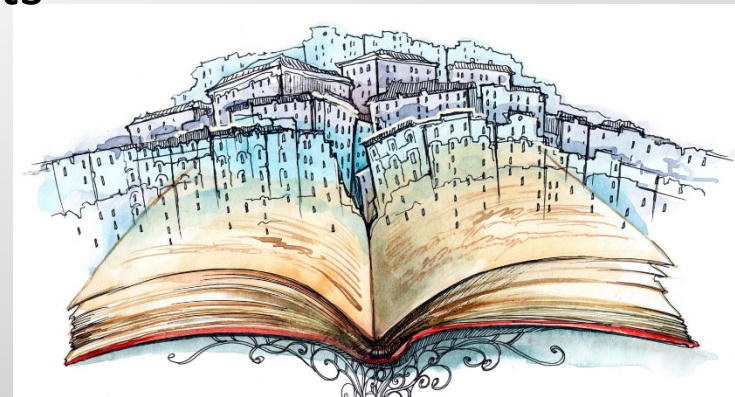
Conclusions & Next Steps

- Invisible technical & organisational complexities were made visible during the pilot RainShare project
- These were explored through narratives & actor-network/social network analysis approaches
- Co-creation was strengthened by collaborative issue resolution
- Invaluable experiential learning was gained by all
- Extended timescale delayed collection of feasibility/performance evidence to support expansion of projects

Wireless Water Meter
Data Logger



HERE'S THE PROOF



WATER STORIES
FROM AROUND THE WORLD

What's next?.....

Exeter and East Devon
Growth Point

RainShare: Urban Agriculture

RainShare: Residential



RainShare: Urban Greening

 = distributed communal harvested rainwater storage





Thank you

Dr Sarah Ward

RainShare

www.rainshare.co.uk

@rainshare

rainshare@outlook.com